

PRINTRONIX®
AUTO ID

T400

COMPACT DESKTOP PRINTER

RELIABLE

AFFORDABLE

COMPACT





Affordable Performance in a Compact Design

The T400 is the premier printer for applications that require a compact, affordable and reliable barcode printer. With eight times more memory than its nearest competitor, plus a large range of standard and optional communication choices, the T400 is ready to keep up with your technology requirements today and tomorrow.



AFFORDABLE PERFORMANCE

- 8 x more memory
- 203dpi / 300dpi
- Ethernet, USB, RS232 (std)
- WiFi 802.11 a/b/g/n (option-Q1,2017)



EASE OF USE

- Compact Design
- Intuitive operation
- Easy media loading
- Holds large 5" dia. media roll



RELIABLE OPERATION

- Durable double clam shell construction
- Proven design for long term reliability
- 1 year warranty

AFFORDABLE PERFORMANCE

The T400 is competitively priced, yet offers higher performance when compared to other printers on the market. Want to get more done? Do it faster. At 6 inches per second, the T400 is the fastest printer in its class. This speed combined with more extensive RAM and Flash Memory means the T400 can handle complex label designs without losing productivity. Your day-to-day operations will function at maximum uptime. The large media roll requires fewer roll changes and the proven reliable design will provide years of uninterrupted service.

WIFI SECURITY

An enterprise network is only as secure as its weakest link.

- The T400 offers an optional state of the art 802.11 a/b/g/n solution with extensive and scalable security offerings.
- The T400 has an expansive security suite to address the growing concerns of enterprise environments.
- WiFi Security Protocol Suite
 - WEP 40/128bit, WPA Personal (PSK), WPA2 Personal (PSK) and Enterprise (AES CCMP), EAP-TLS, EAP-TTLs, PEAPv0/MS-CHAPv2, PEAPv1, EAP-FAST, EAP-MD5
 - Accepts Security Certificates (up to 4096 bit) as part of the T400 enterprise security suite



Printronix Auto ID is continuing to monitor and expand security requirements to meet the needs of the industry.

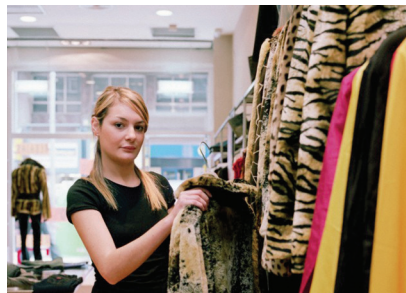
APPLICATIONS

Designed to thrive in real-world applications; the T400 offers a compact design with easy to use features and a standard of reliable performance usually reserved for more expensive printers. The T400 is the ideal choice for:



Medical and Pharmaceutical

- Nursing stations
- Pharmacies
- Patient wristbands



Retail

- Shelf labeling
- Front office
- Point-of-sale



Shipping and Receiving

- Light duty labeling
- Pick tickets
- On-demand printing

T400

SPECIFICATIONS

PRODUCT BENEFITS

- * 32-bit RISC high performance processor
- * Double wall clamshell construction
- * Direct printing
- * Available in 203 DPI and 300 DPI
- * 64 MB SDRAM / 128 MB Flash Memory
- * 4" model configuration

PRINTER SPECIFICATIONS

Max Print Speed (4")	6 IPS @ 203 DPI / 4 IPS @ 300 DPI
Print Method	Direct
Resolution	203 DPI / 300 DPI
Max. Print Width	4.25" (108mm)
Printer Memory	64 MB SDRAM / 128 MB Flash Memory

MEDIA SPECIFICATIONS

Media Applications	Product marking, point of sale, retail, small office, shipping labels, and other labeling and tag application
Min. Media Width (4")	0.7 (19mm)
Max. Media Width	4.5" (114.3mm)
Min. Media Length	0.25" / 1.0" (Continuous/Tear-Off)
Max. Media Length	90" (2,286 mm)
Media Thickness	2.16 mil(.055mm) to 7.48 mil(.19mm)
Media Roll Core Diameter	1.0" (25.4mm)
Max. Media Roll Diameter	5.0" (127mm)
Media Sensing	Transmissive gap sensor, Black mark reflective sensor, Head open sensor
Media Type	Continuous, black mark, fan-fold, notched (outside wound)

MEDIA HANDLING MODES

Standard	Continuous, Tear-Off Strip
Options	Peel-Off, Cut

PHYSICAL CHARACTERISTICS

Width	7" (177.8mm)
Height	6.5" (165mm)
Depth	7.6" (193mm)
Printer Weight	4.32lbs (1.96kg)
Shipping Weight	5.8 lbs (2.63kg)

PRINTER LANGUAGE

Printer Languages	EPL, ZPL, ZPL2
-------------------	----------------



COMMUNICATION AND CONNECTIVITY/INTERFACE

Standard Interface I/O	Serial RS232, USB 2.0, and Ethernet 10/100Base T
Optional Interface I/O	WiFi, 802.11 a/b/g/n (US only)
WiFi Security Protocol	WEP 40/128bit, WPA Personal (PSK), WPA2 Personal (PSK) and Enterprise (AES CCMP) EAP-TLS, EAP-TTLS, PEAPv0/MS-CHAPv2, PEAPv1 EAP-MD5

OPERATING ENVIRONMENT

Operating Temperature	40 to 104 °F (5 to 40 °C)
Operating Humidity	20 - 85% Non-Condensing
Storage Temperature	-40 to 140 °F (-40 to 60 °C)
Storage Humidity	10 - 90% Non-Condensing

POWER REQUIREMENT

Line Input	Auto Range AC 100-240V, 50-60Hz
Printer Output	DC 24V, 2.5A, 60W

REGULATORY COMPLIANCES

Emissions	FCC, CE, CCC
Safety	cTUVus, CE
Environmental	RoHS, WEEE, ENERGY STAR®
Radios (WiFi)	FCC others based on market need

BAR CODE SYMBOLOGIES

1D Barcodes	Code 39, Code 93, Code128UCC, Code128 subsets A,B,C, Codabar, Interleave 2 of 5, EAN-8, EAN-13, EAN-128, UPC-A, UPC-E, EAN and UPC 2(5) digits add-on, MSI, PLESSEY, POSTNET, RSS-Stacked, GS1 DataBar, Code 11, China Post
2D Barcodes	RSS-Stacked, GS1 DataBar, Code 11, China Post PDF-417, Maxicode, DataMatrix, QR code, Aztec, MicroPDF-417

FONT, GRAPHIC SUPPORT

Internal Fonts	8 alpha-numeric bitmap font Monotype Image® true type font engine with one CG Triumvirate Bold Condensed scalable font
Font and barcode rotation	0, 90, 180, 270 degree

OPTIONS AND ACCESSORIES

- * WiFi 802.11 a/b/g/n (US only) includes Real Time Clock
- * Peel & Present
- * Cutter



PRINTRONIX
AUTO ID



Contact your local Printronix Auto ID authorized reseller.

Legacy Technology Services

We Rent & Sell All Types Of Barcode Equipment

Call now to talk to an expert

866-271-9891

www.LegacyGlobal.com

Some brands we carry



MOTOROLA

Intermec

DATALOGIC™

Honeywell

EQUINOX
PAYMENTS



About us

- Legacy Technology Services is a leading nationwide provider of mobile computing, barcode, printers and point of sale equipment and services.
- For over a decade, thousands of clients across North America have trusted us to provide equipment from leading manufacturers backed by the services to support them.

Latest Hardware from top manufacturers

- Legacy handles virtually every major manufacturer of mobile computing, barcoding and point of sale equipment.

Expert Repair and Maintenance services

- Legacy is one of the best repair facilities in North America

Discontinued product sourcing

- They don't make it anymore? Our inventory also includes manufacturer close-outs and discontinued equipment to support our clients legacy infrastructure.

Trade-in and Disposal services

- That old equipment laying around your facility may still have some value. Legacy routinely purchases equipment from our clients around the globe.
 - Data destruction
 - Hardware disposal
 - Auditing services

Dedicated client account team

- Dedicated, highly trained account managers are here to answer all your questions and provide top notch service.

Equipment rental services

- Sometimes renting is a better solution, Legacy's huge rental inventory provides the equipment you need for temporary needs and projects.



Legacy, Inc.,
160 West Road,
Ellington, CT 06029

Toll Free: 866-271-9891
Fax: 888-522-4684